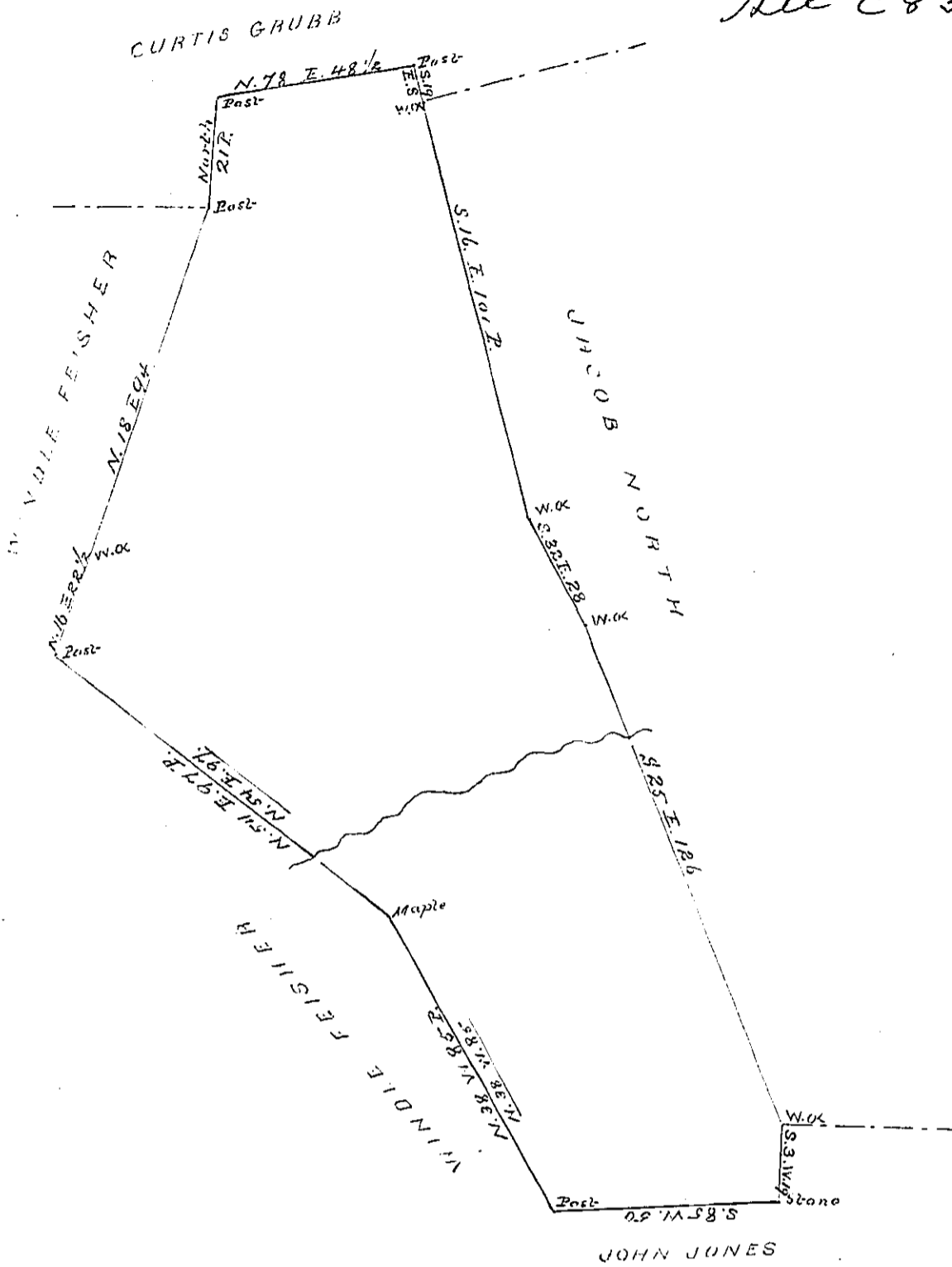


See C 83-178



By Virtue of an Application No. 644, dated the 27<sup>th</sup> day of August 1765, Surveyed the first day of May 1790 to Susanna Albert the above described Tract of Land, situate in Bethel Township, Dauphin County, containing One hundred and sixty one Acres and allowance of Six <sup>1</sup>/<sub>2</sub> Cent.

To Daniel Prosdhead Esquire  
 Surveyor General of Pennsylvania

Thomas Clark D. J.

IN TESTIMONY that the above is a copy of the original remaining on file in the Department of Internal Affairs of Pennsylvania, made conformably to an Act of Assembly approved the 16th day of February, 1833, I have hereunto set my Hand and caused the Seal of said Department to be affixed at Harrisburg, this

Twenty-eighth day of October 1887.

*Thos. J. Stewart*  
 Secretary of Internal Affairs